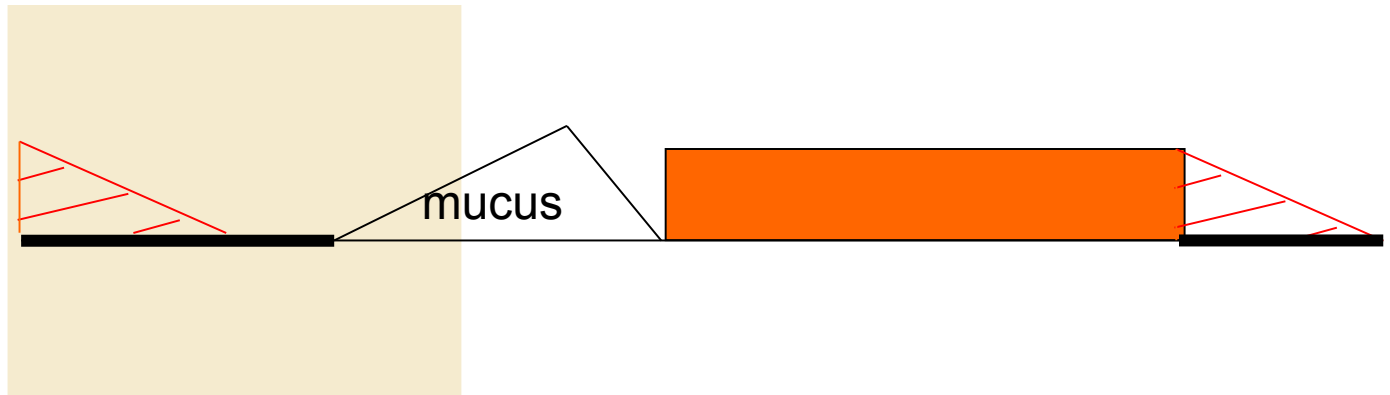

FSH, LH, EIG and PDG

during **the first 12 days** of the cycle



QUIDEL data

- 107 normally fertile women aged 18 to 45
- 3 cycles
- Daily measurements of urinary E1G, PDG, FSH and LH (standardized by creatinine).
- Cervical mucus and BBT
- Transvaginal ultrasound

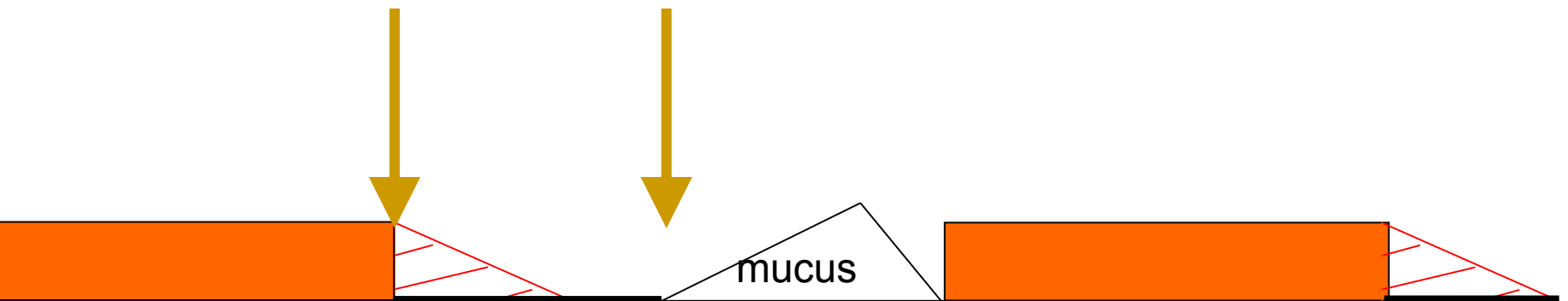
Method

- Latent Class Analysis (LCA)

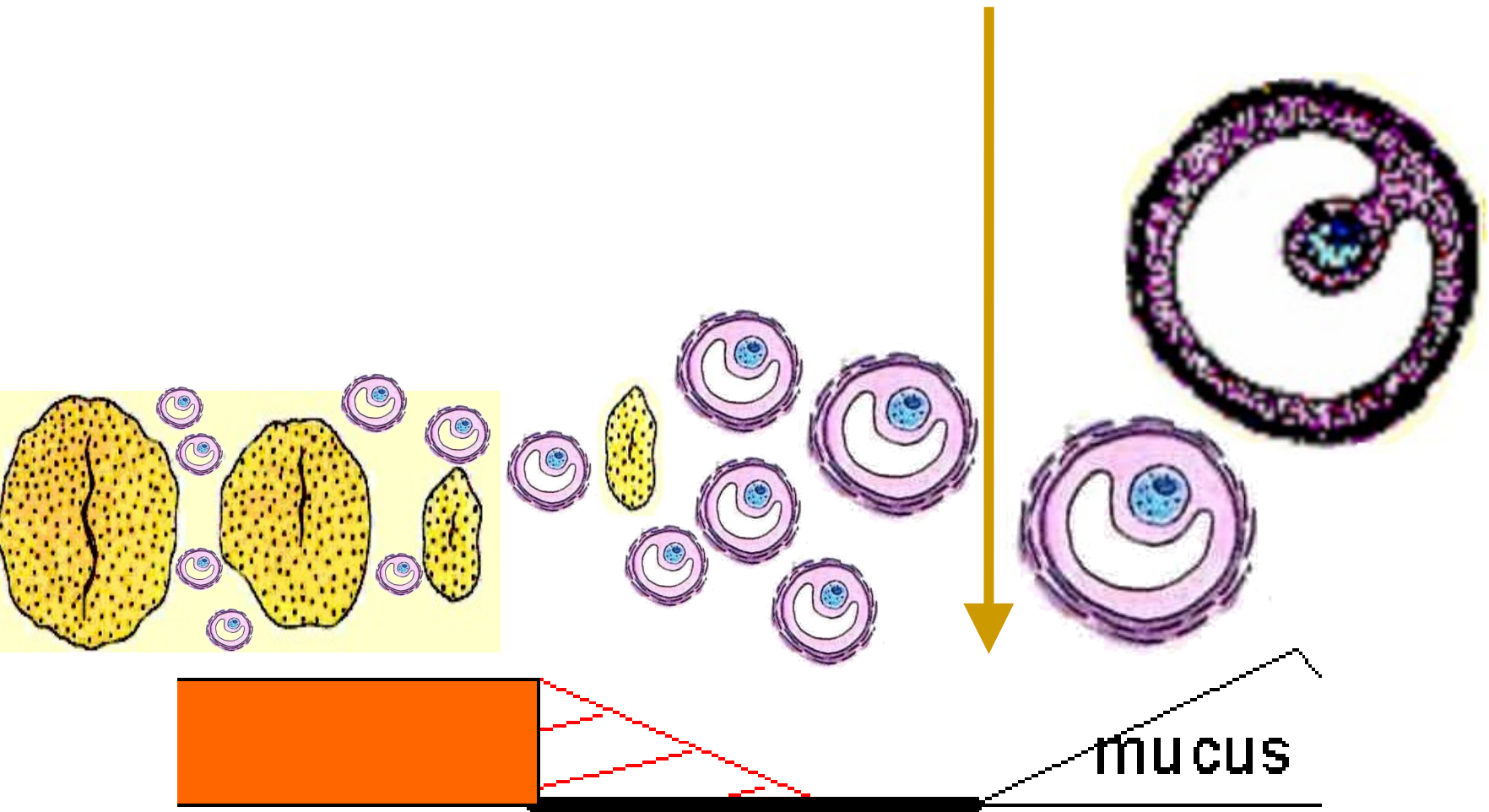
- Transitions

from one cycle
to the next

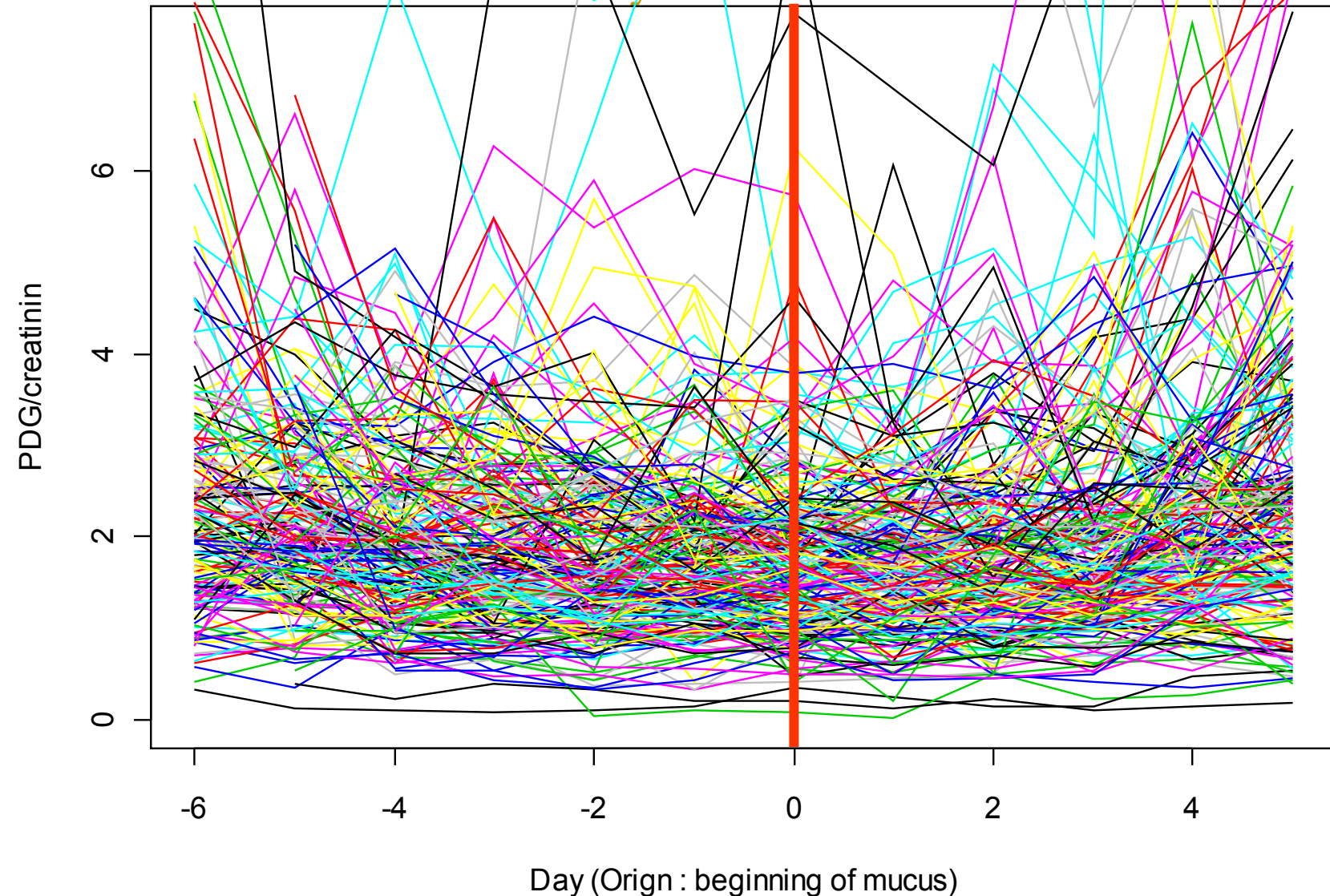
onset of
fertile phase



Onset of fertile phase

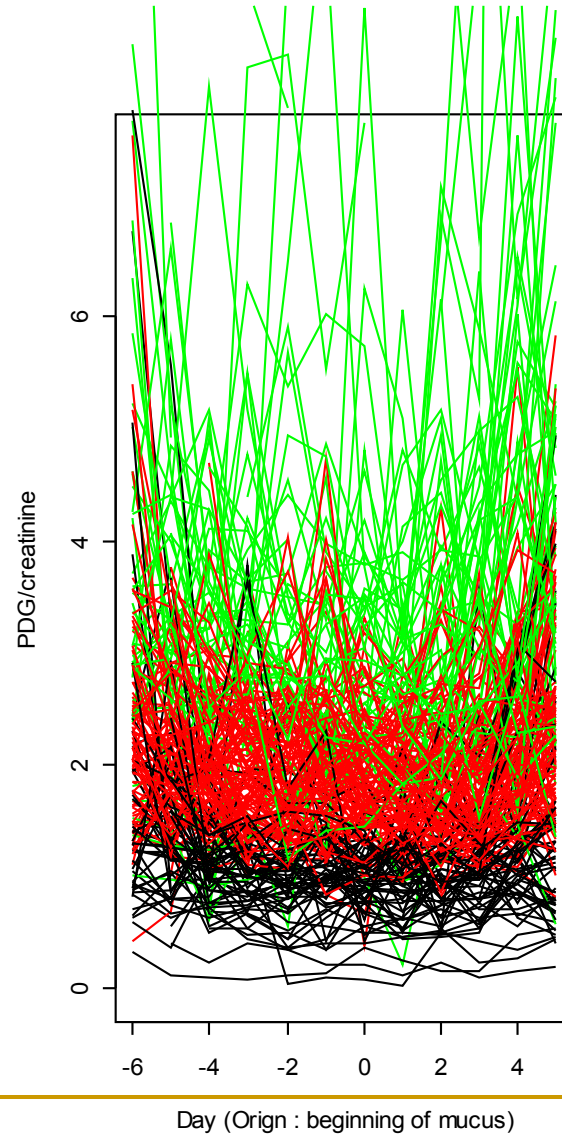
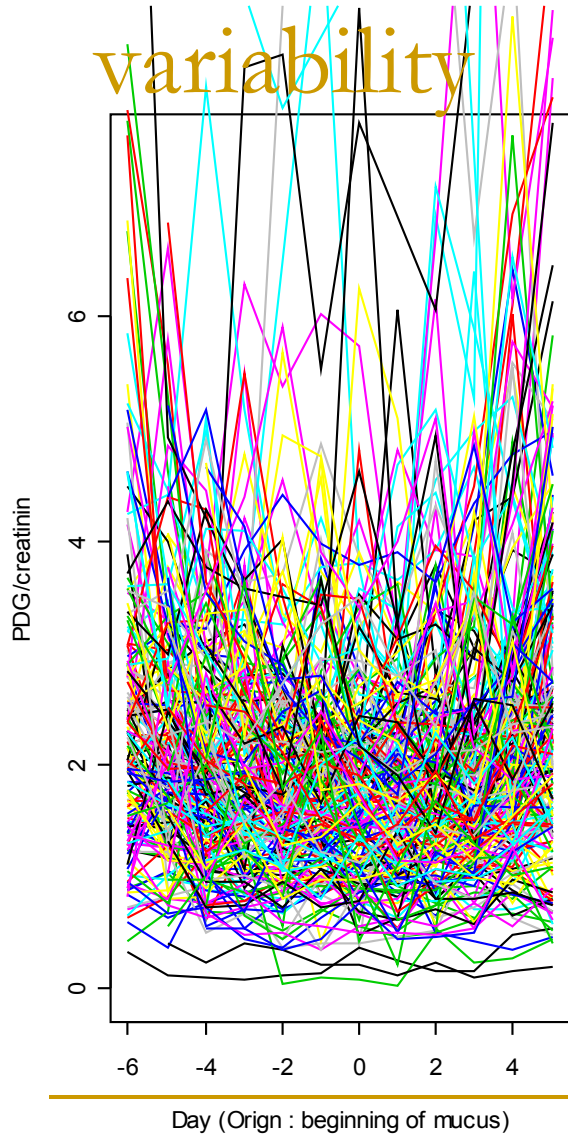


Progesterone before and after onset of mucus : variability

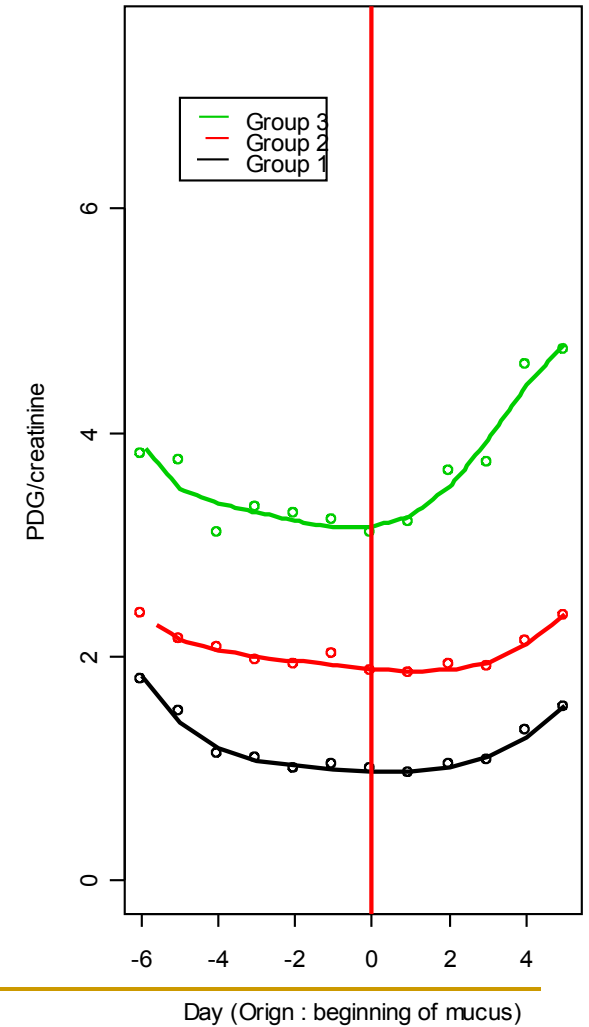


Latent Class Analysis (LCA)

variability

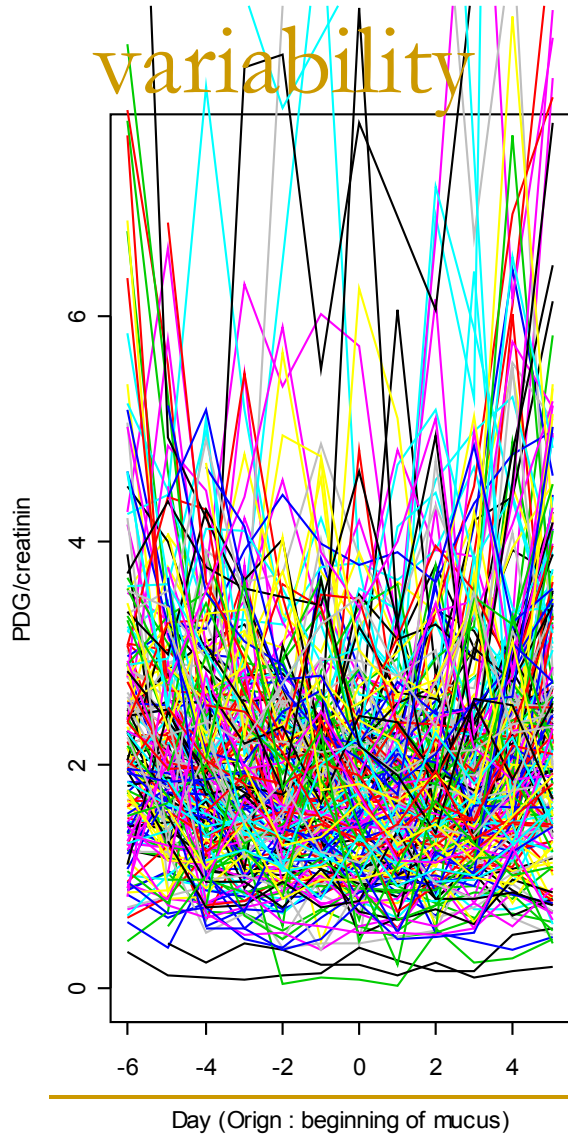


Group1: 0.27; Group2: 0.49; Group3: 0.24

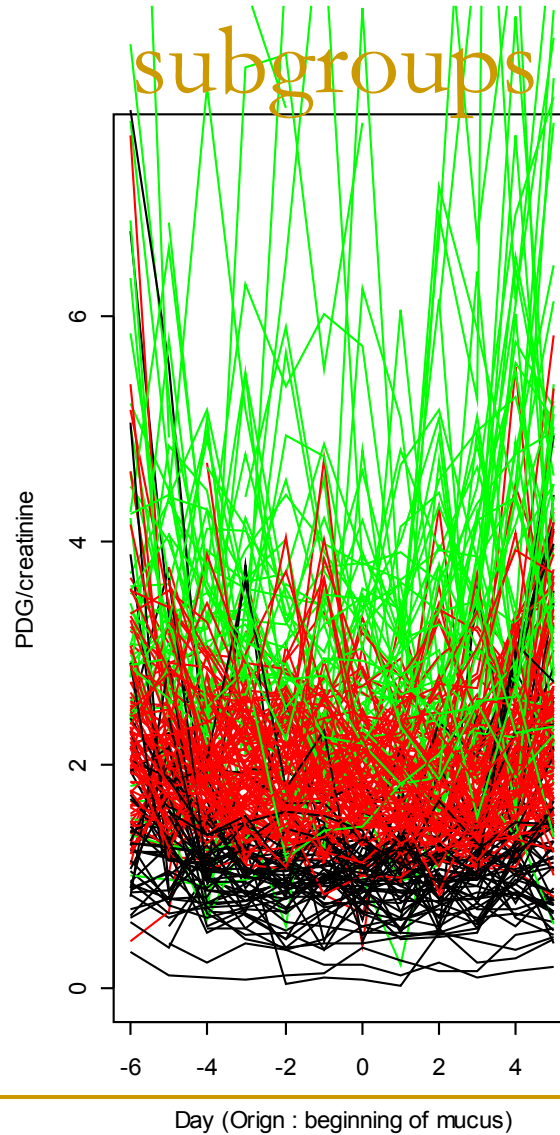


Latent Class Analysis (LCA)

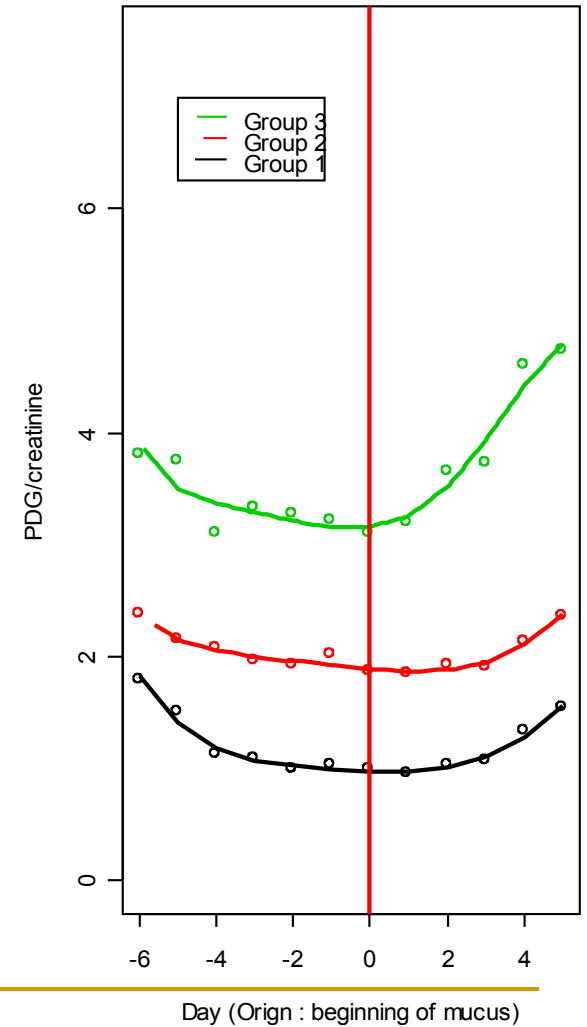
variability



subgroups

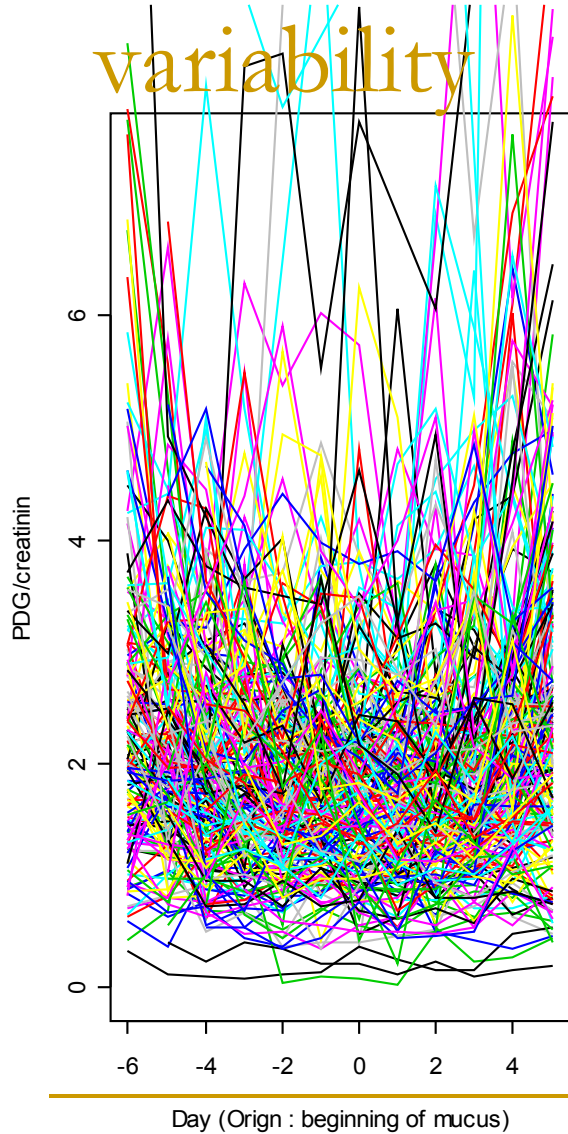


Group1: 0.27; Group2: 0.49; Group3: 0.24

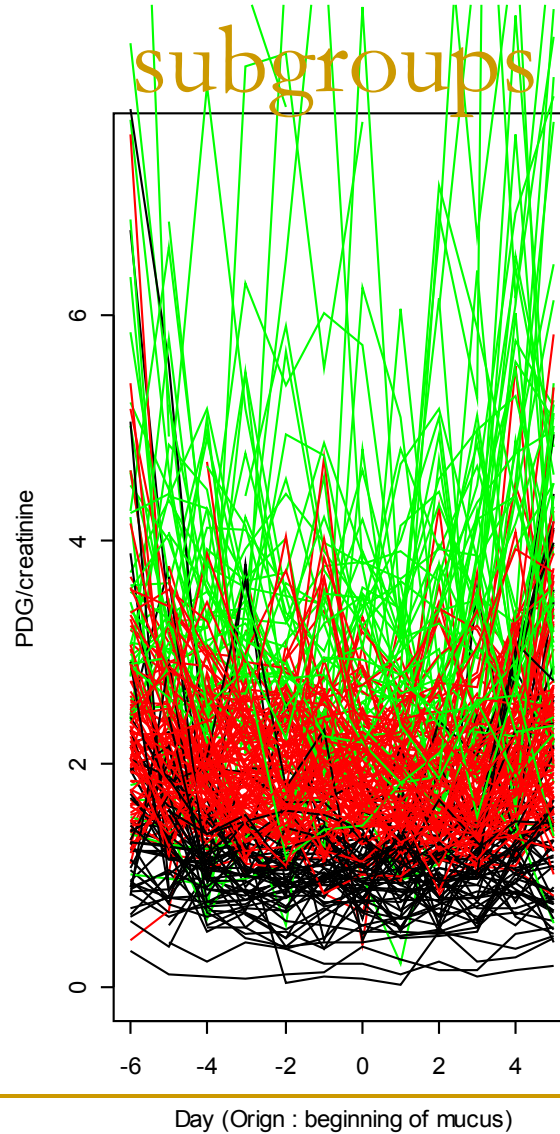


Latent Class Analysis (LCA)

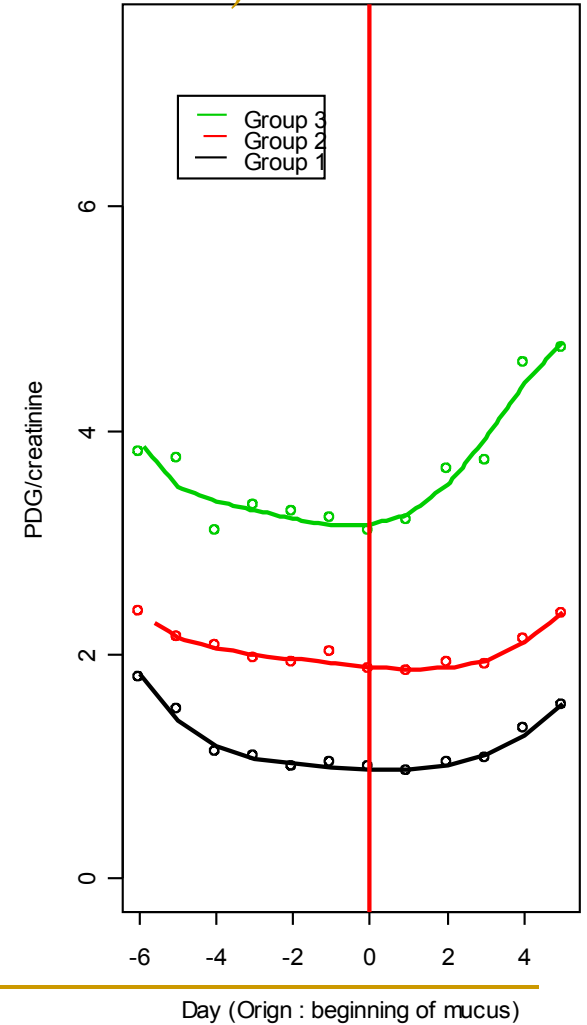
variability



subgroups



trajectories



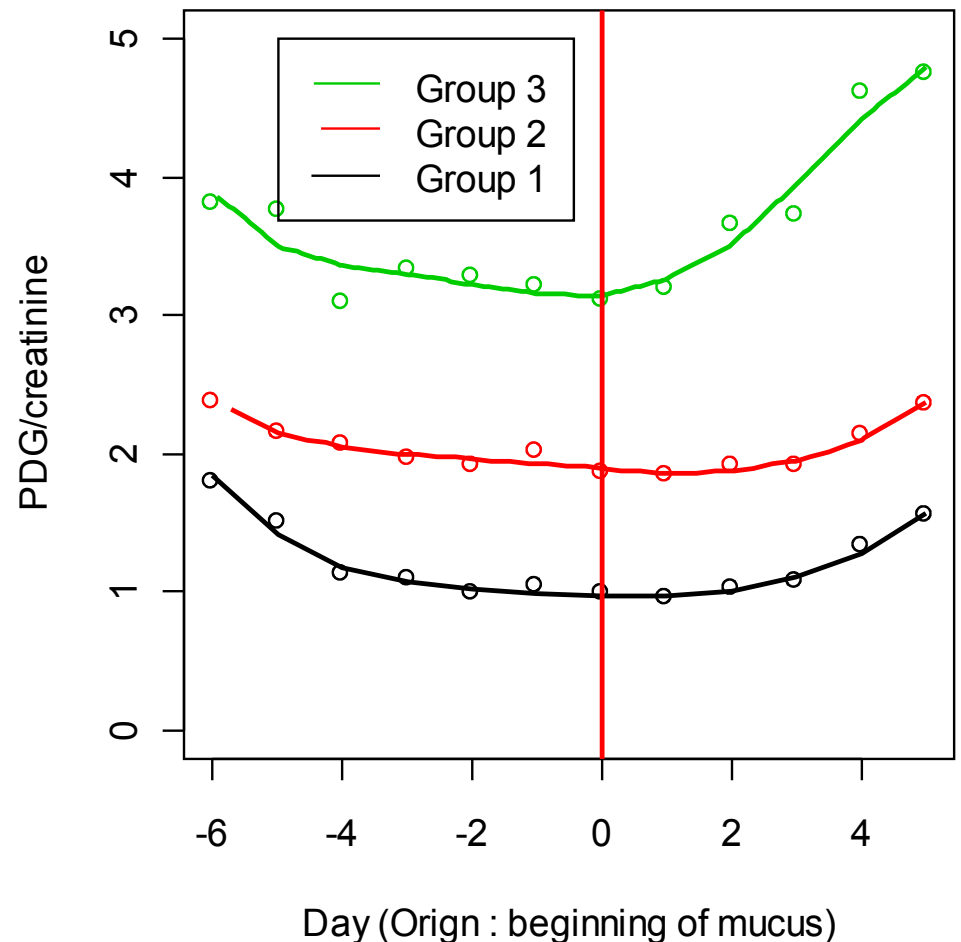
Onset of fertile phase

Progesterone

■ U-shaped

■ Onset of mucus :
nadir of
progesterone

Group1: 0.27; Group2: 0.49; Group3: 0.24

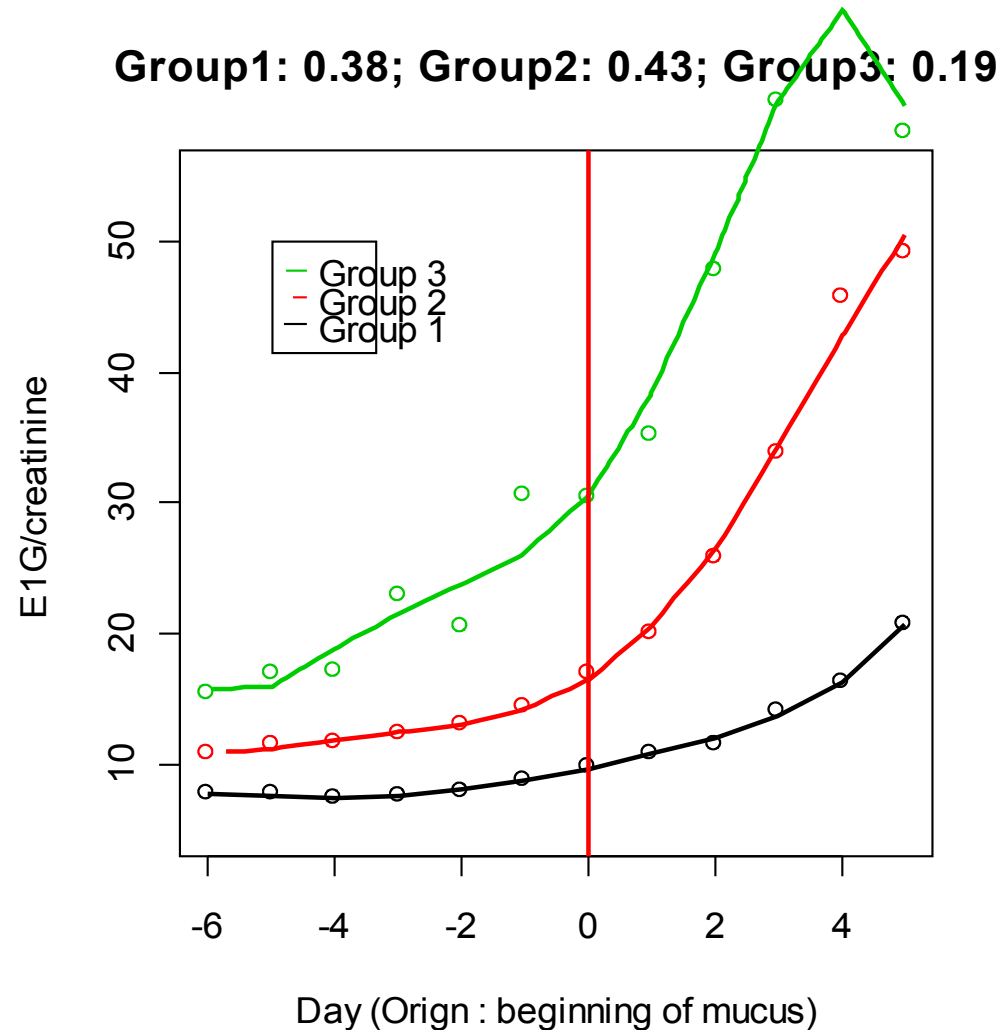


Onset of fertile phase

Estrogens

- Increases **several days before** the onset of the mucus symptom

- **No threshold**

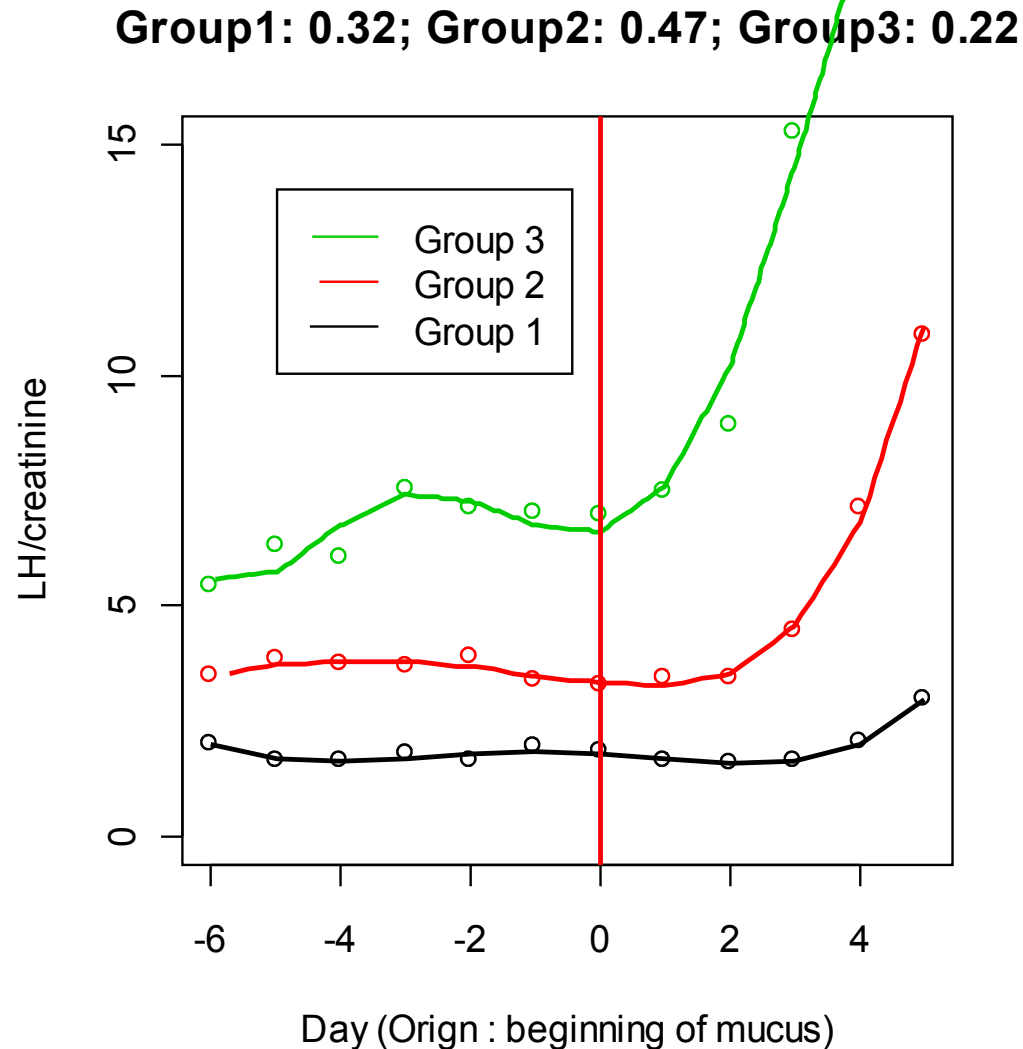


Onset of fertile phase

LH

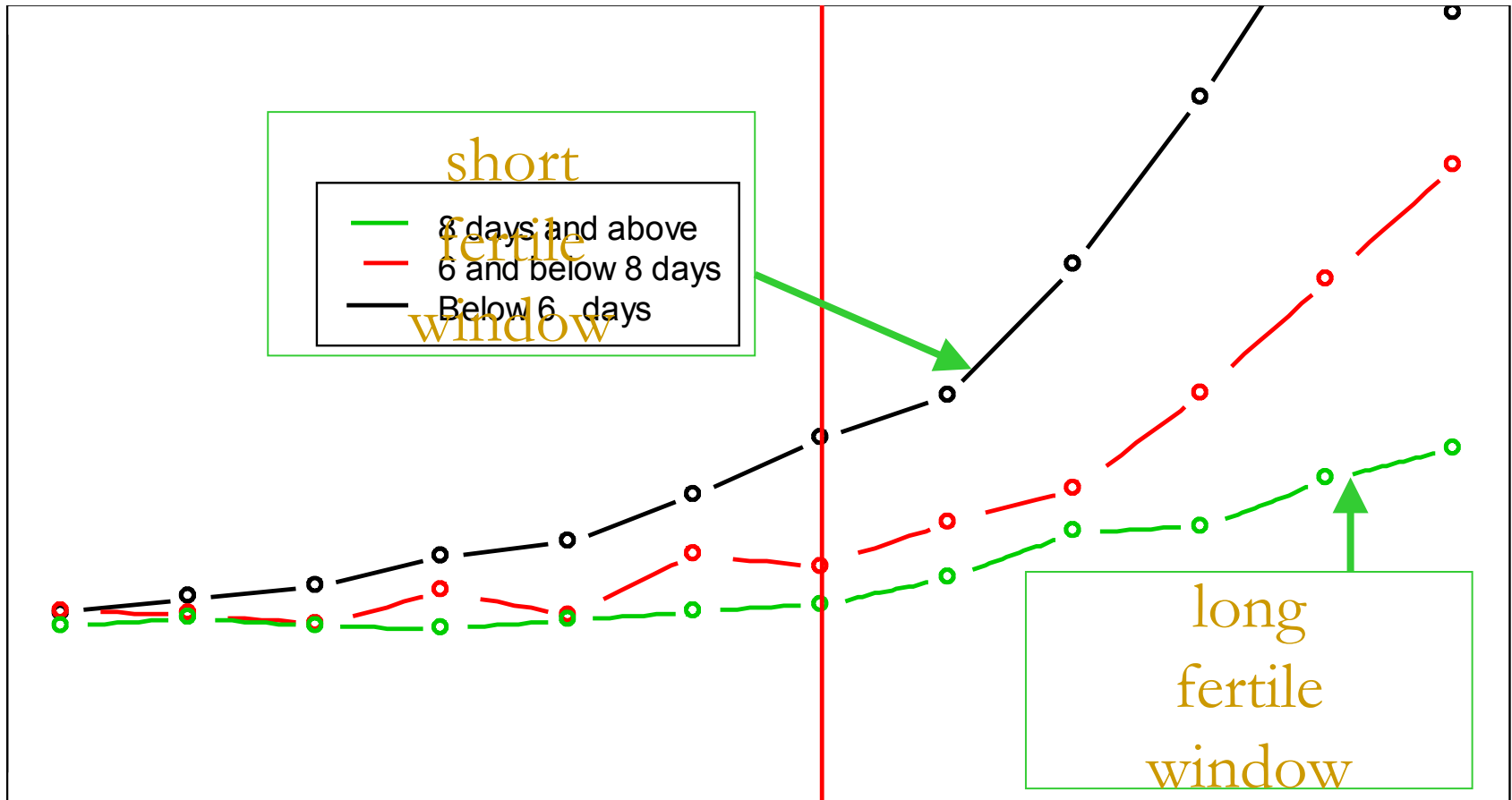
- High LH, sharp and immediate increase

- Low LH, delayed increase



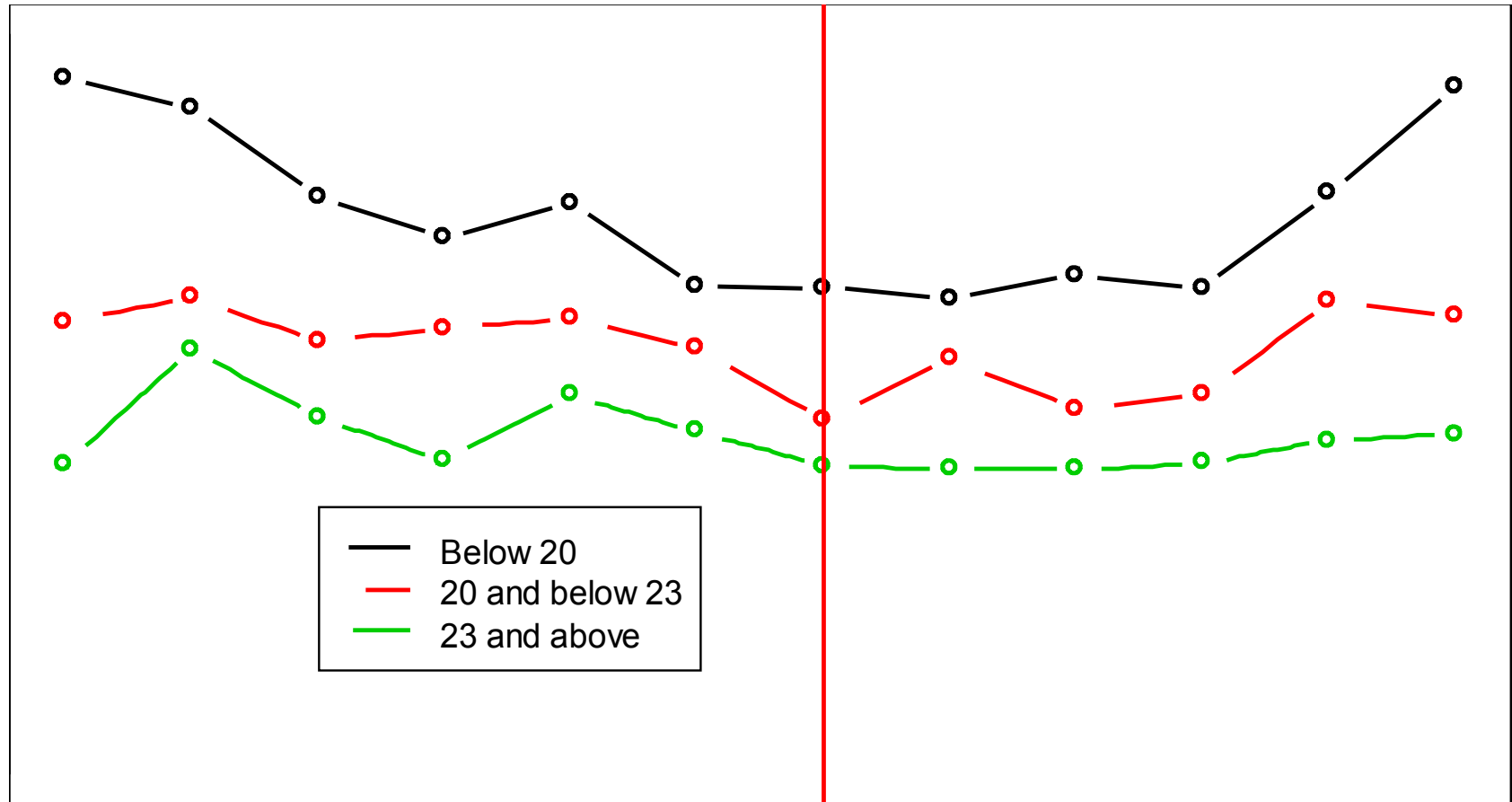
Onset of fertile phase

High Estrogens, short fertile window

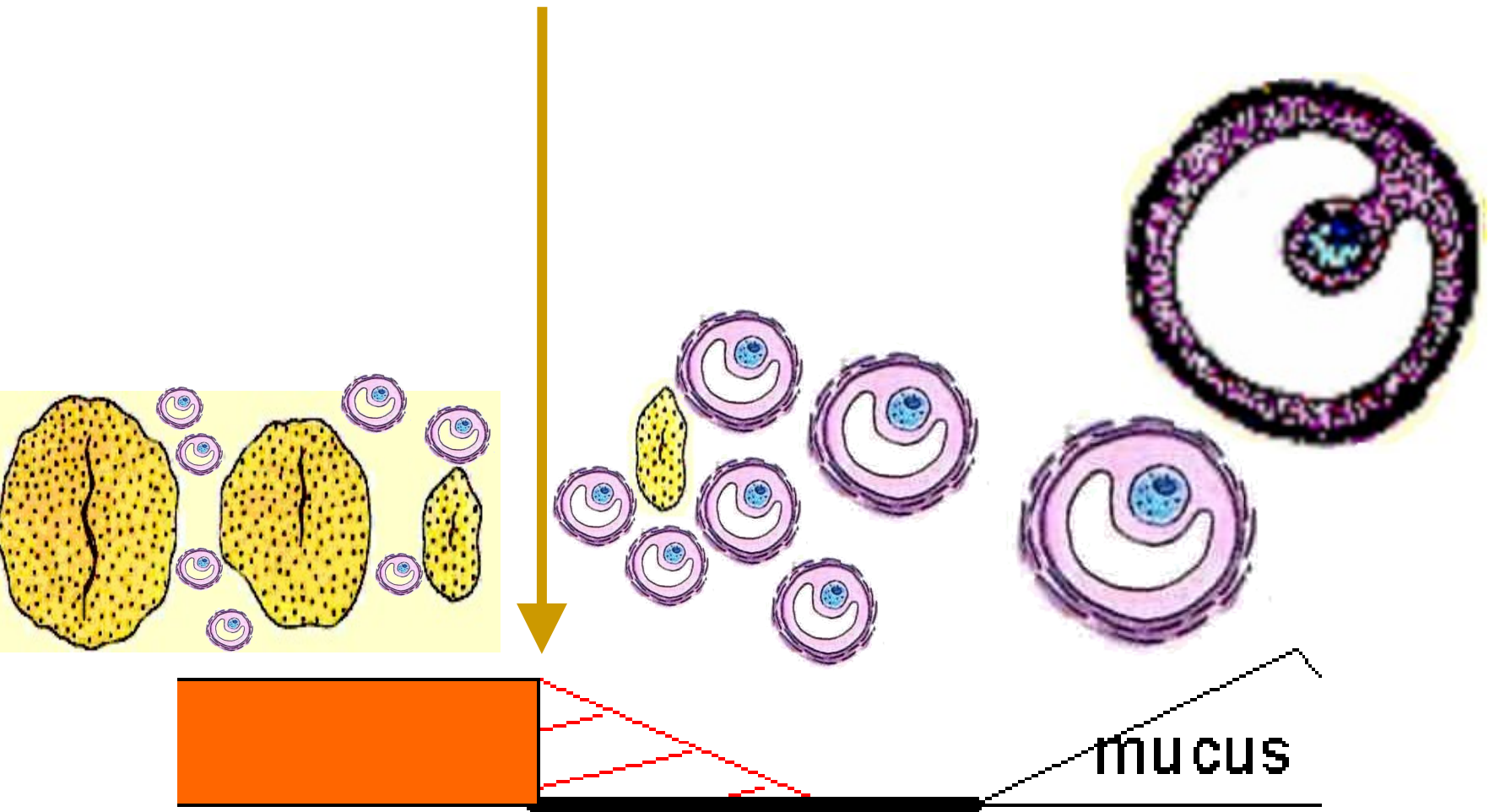


Onset of fertile phase

Low BMI, high FSH

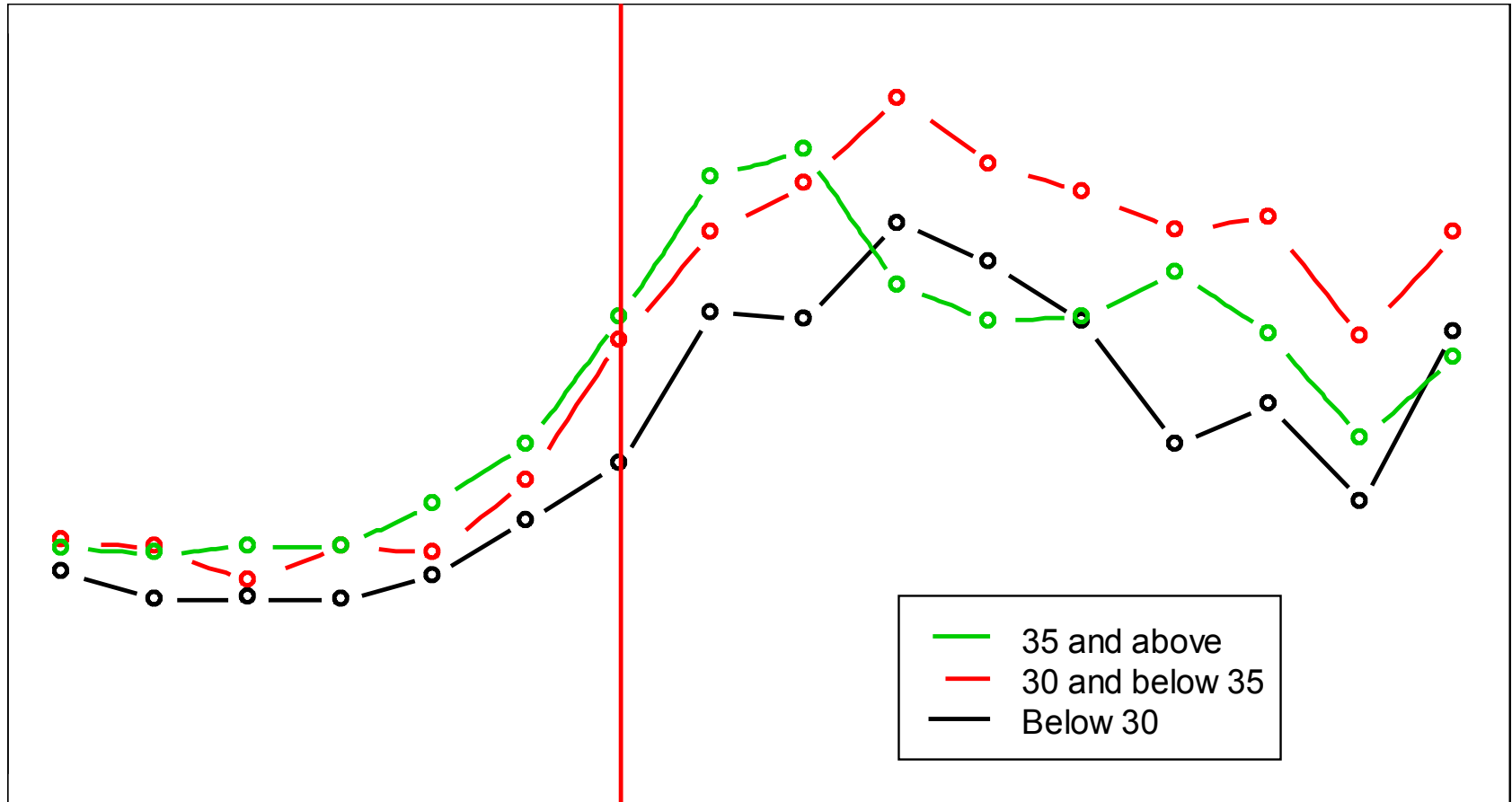


From one cycle to the next



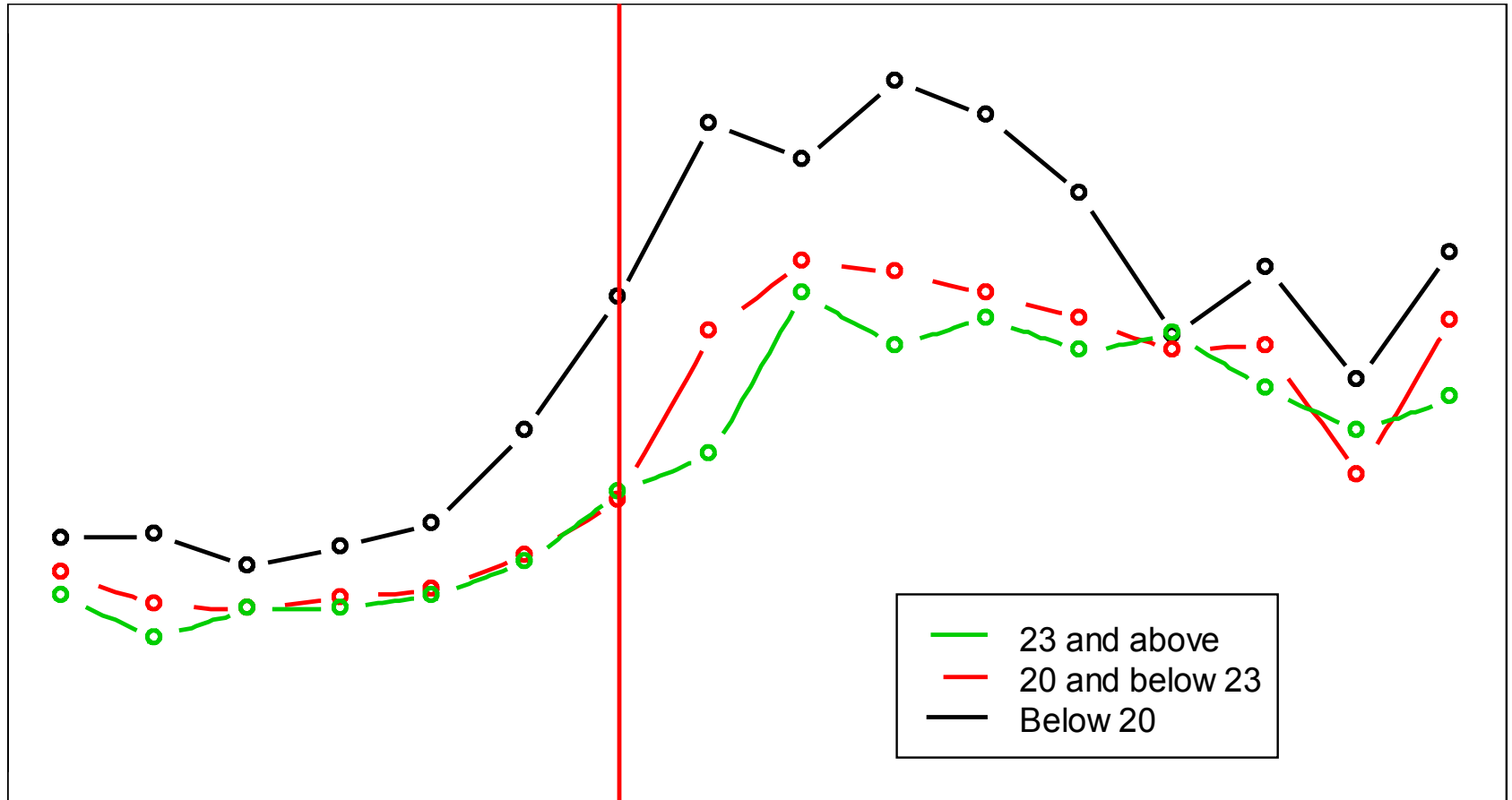
From one cycle to the next

Older age, higher and earlier FSH rise



From one cycle to the next

Low BMI, high FSH



During the first 12 days of the cycle

■ Onset of mucus

- nadir of progesterone
- no evidence in favour of a threshold of estrogen

■ Hormonal levels and fertile window

- high estrogen, short fertile window
- high LH, rapid increase during fertile window

■ Hormonal levels and characteristics

- Age : FSH higher and earlier
 - Low BMI : FSH higher
-

During the first 12 days of the cycle

- Onset of mucus
 - nadir of progesterone
 - no evidence in favour of a threshold of estrogen
- Hormonal levels and fertile window
 - high estrogen, short fertile window
 - high LH, rapid increase during fertile window
- Hormonal levels and characteristics
 - Age : FSH higher and earlier
 - Low BMI : FSH higher

During the first 12 days of the cycle

- Onset of mucus
 - nadir of progesterone
 - no evidence in favour of a threshold of estrogen
- Hormonal levels and fertile window
 - high estrogen, short fertile window
 - high LH, rapid increase during fertile window
- Hormonal levels and characteristics
 - Age : FSH higher and earlier
 - Low BMI : FSH higher

Thank you !

Complementary slides

E1G on log scale

Group1: 0.38; Group2: 0.43; Group3: 0.19

